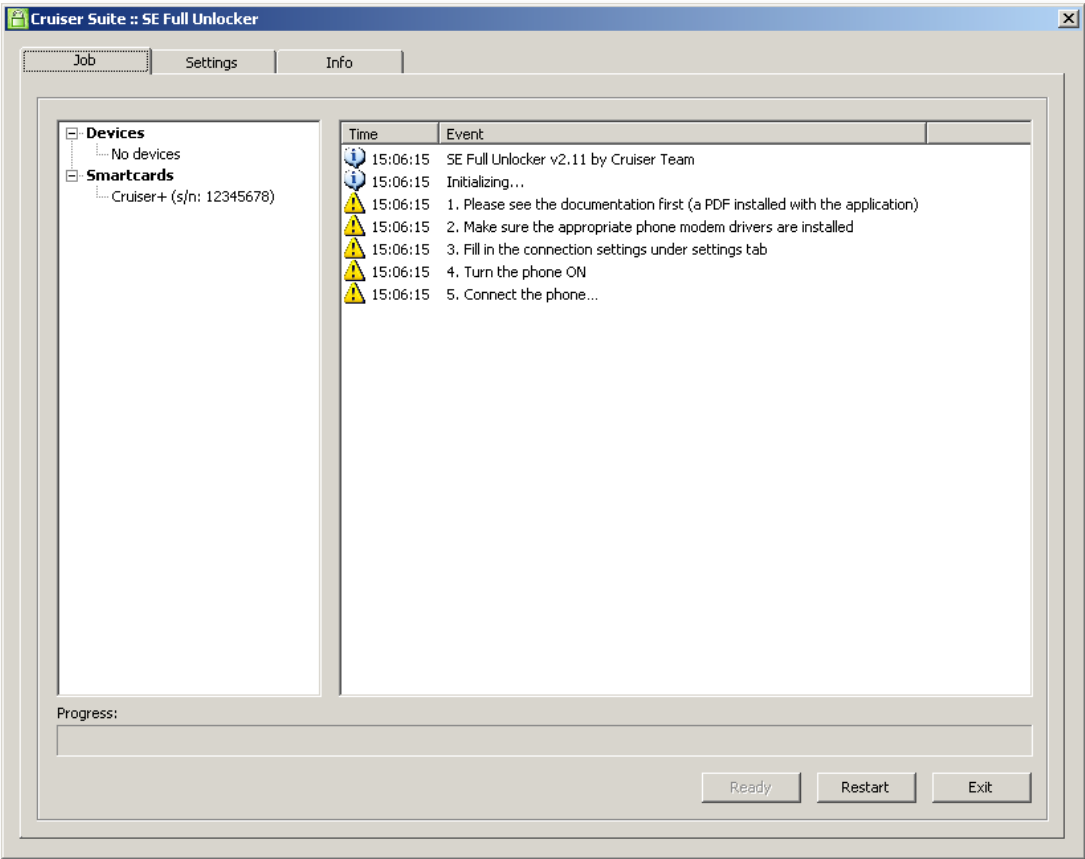


Cruiser Suite SE Full Unlocker User's Guide

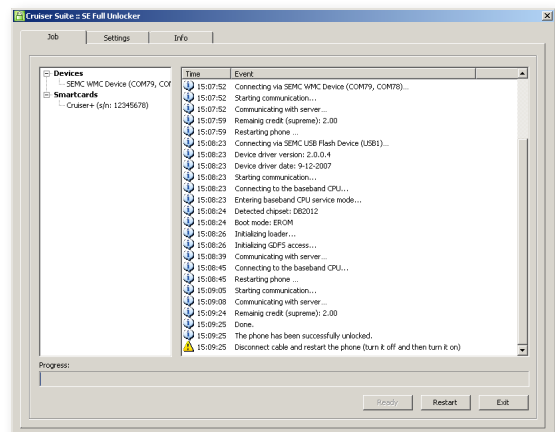
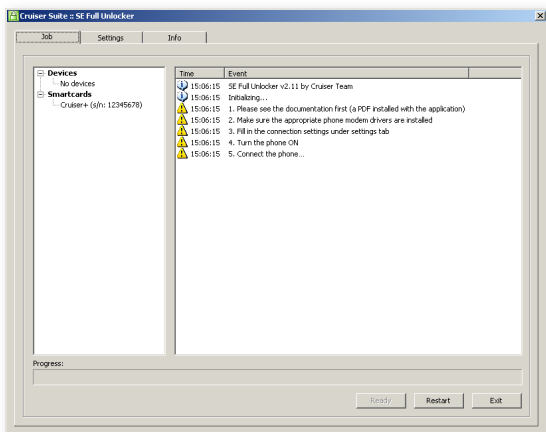


Contents

Introduction 3

Installation 4

Unlocking procedure 5



Introduction

Cruiser Suite SE Full Unlocker is an application for **full and permanent unlocking** of almost all SonyEricsson phones. Cruiser Suite SE Full Unlocker can also fully **repair** a damaged security zone. The phone must be previously flashed with a correct firmware.

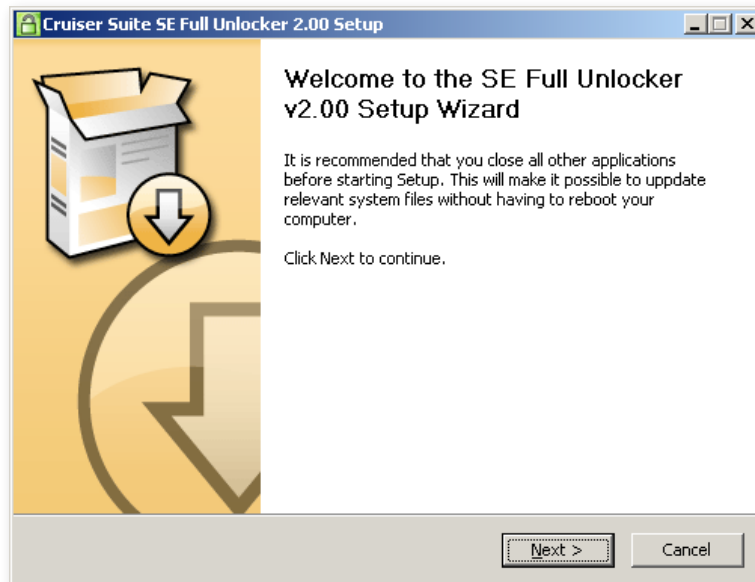
Currently supported platforms:

- PDA DB2000
- PDA DB2001
- DB2012
- DB2020
- DB3150
- PNX5230



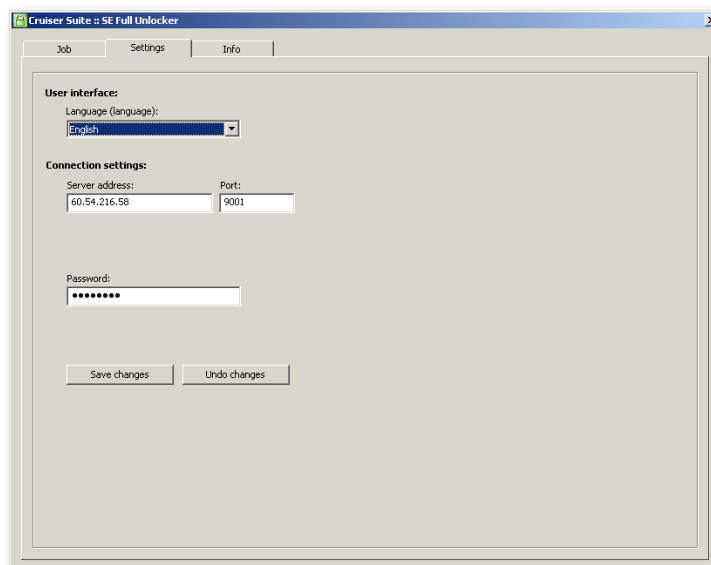
Installation

1. Run installer `SeFullUnlocker_v2.10-installer.exe`
2. Follow the installation wizard’s instructions



Unlocking procedure

1. Make sure **Cruiser+ SmartCard** is plugged in your computer. Card ID must end with "-07".
2. Install phone modem drives corresponding to the specific phone. It can be downloaded from cruiser suite support area:
<http://www.cruisersuite.com/default.aspx?cms.page=downloads>
in section **Software_GSM -> Cruiser_SeFullUnlocker -> ModemDrivers**
3. Run `SeFullUnlocker.exe`
4. Click the **Settings** tab, and fill in the connection data there:
Server data:
 - IP address/host name (currently 60.54.216.58)
 - port (currently 9001)**Your account data:**
 - password



continued ►

5. Click the **Job** tab, and start the unlock procedure:

5.a in **User mode** (recommended for unlocking a working phone):

- power on the phone
- connect the cable without holding any button

5.b in **Repair mode** (recommended only if GDFS security zone is damaged):

- remove/install battery on the phone
- connect the phone while holding ‘C’ button
- **Important:** when the phone restarts and powers on, it’s required to reconnect the cable

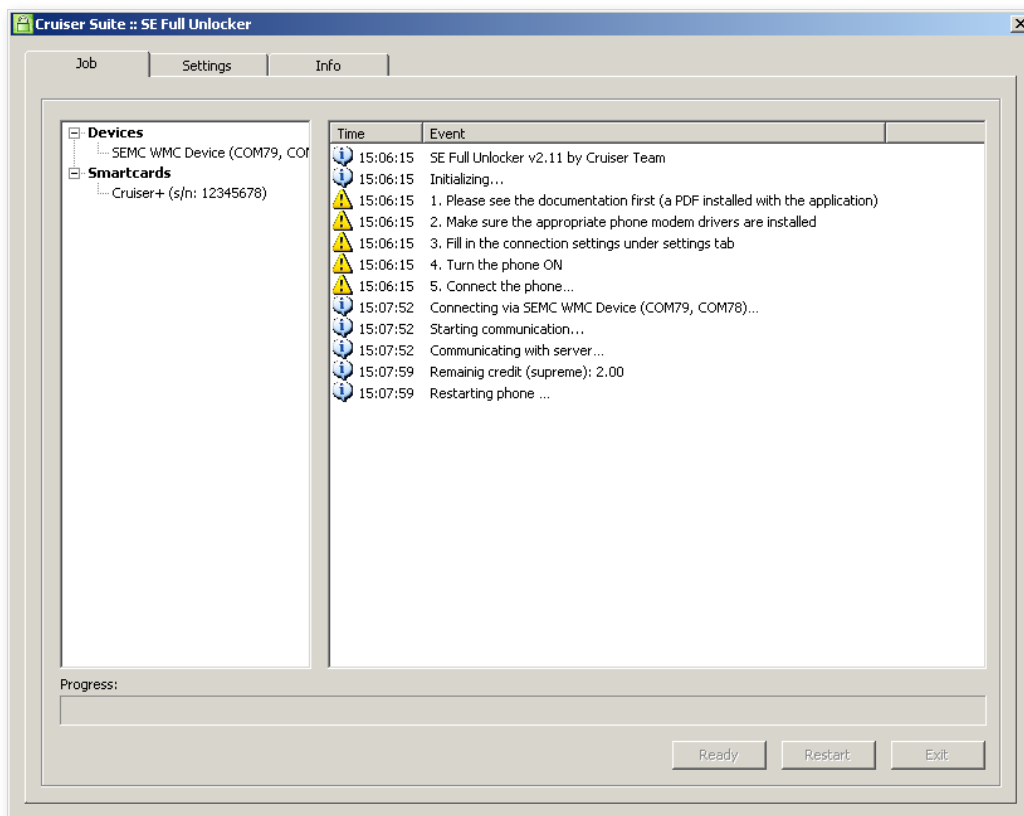


Fig.: Phone is restarted twice during the process

6. Sometimes there might be a lack of server resources, so your operation can be scheduled to specific time and the application asks you to wait. If the period is too long to wait, you can close the application and disconnect the cable and the battery from the phone, and start the procedure again after the wait period elapses.
7. Please wait until the unlock procedure finishes.

